

>>THIS WEEK'S TOPIC:

Organization & Structure of CKI <<

CKI Organization

Circle K operates on a three-tiered system. Those three levels and a brief description of them are listed below. A more in-depth chart detailing the chain of leadership for the Carolinas District is also included. All levels of Circle K aim to provide resources to better membership and enhance the service, leadership and fellowship experience.

International Level

- The International Board oversees organizational policy and strengthens the organization in terms of future growth and international expansion.
- The International Board is elected at the International Convention each summer.
- The Board is composed of one International President, one International Vice-President, and seven International Representatives.
- There are seven Sub-Regions (A-G) in which the districts are grouped geographically. The International Representatives serve as liaisons between the International Board and the Districts in their respective Sub-Regions

District Level

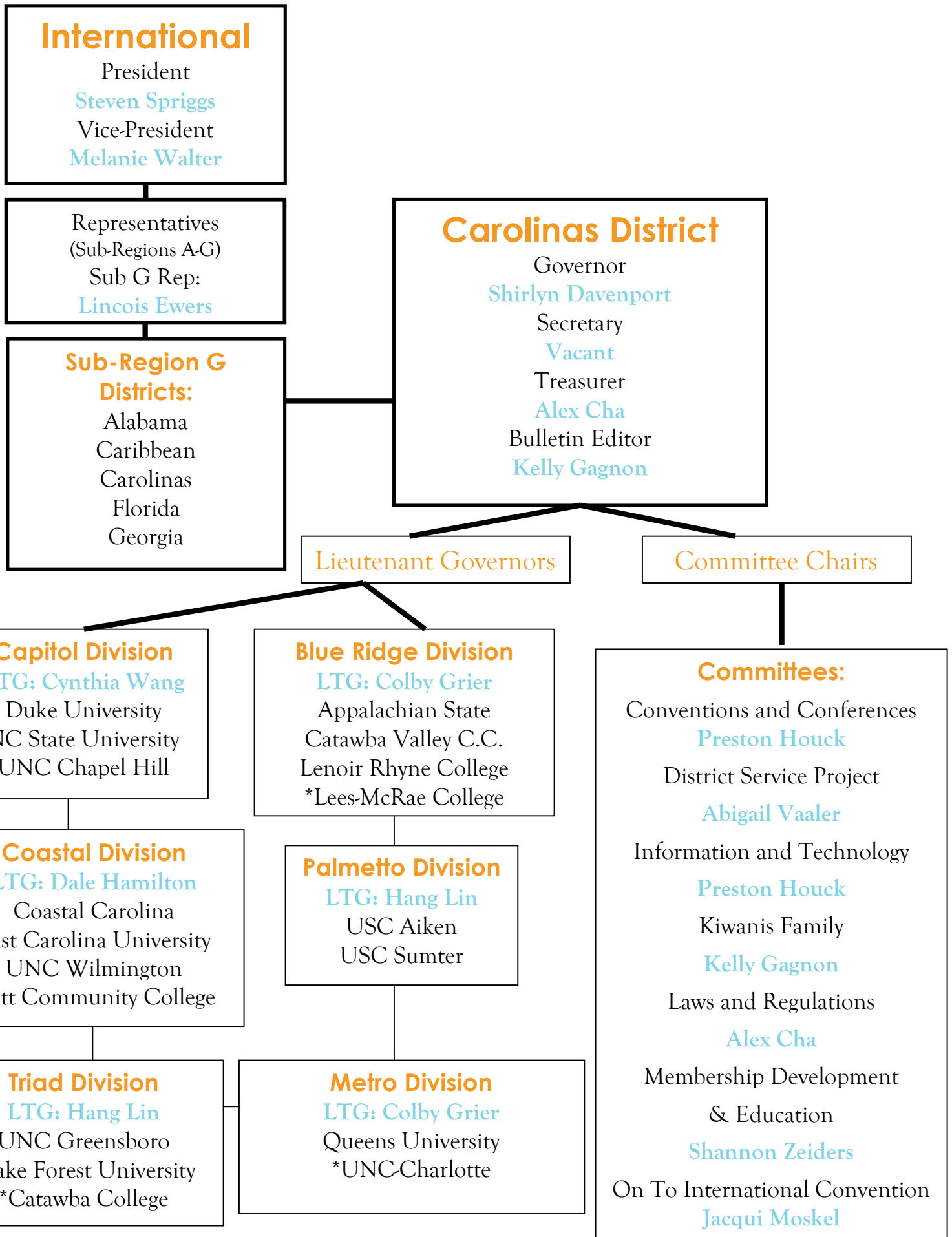
- District Boards provide support and guidance to the Circle K clubs within their geographical area.
- All districts are headed by a Governor and can have a Secretary, Treasurer, and sometimes a Bulletin Editor. Some districts also have Lieutenant Governors and committee chairs. The position of Secretary and Treasurer are combined in some districts.
- All districts in Circle K International hold an annual District Convention in either February or March for member education, club officer training and election of the District Board.
- Districts are charged with implementing International policies within their represented clubs.
- All District Boards are responsible for providing resources on club building, Kiwanis Family relations, laws and regulations, membership retention/education to each club, and planning District events for the membership (e.g. District Convention).

The Club Level

- Club Boards are a very important aspect of CKI as they are the leaders that work within their community.
- Club Boards work with their District Boards on membership recruitment strategies, Kiwanis Family projects, membership retention/education, and fellowship events.
- Club Boards plan community service projects and social events for their members.
- CKI recommends all clubs to elect their new Club Boards before their District Convention.

CKI Structure

Circle K is a student run international organization that has many different levels of leadership. Trying to decipher the flow of leadership can get quite confusing. Presented, is a chart to help you out, going from the International Level to Sub-Regions to Districts, all the way down to the most important one: the Clubs!



*** Denotes clubs that are currently being built.**